

Digital Archives: Getting Started

Lacy DunLavy
Eagle Valley Libraries

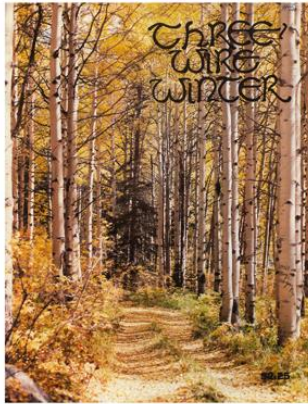
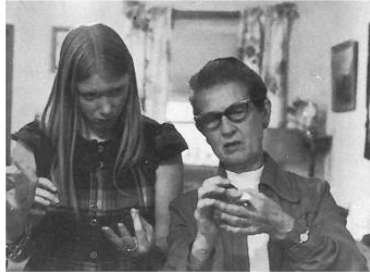
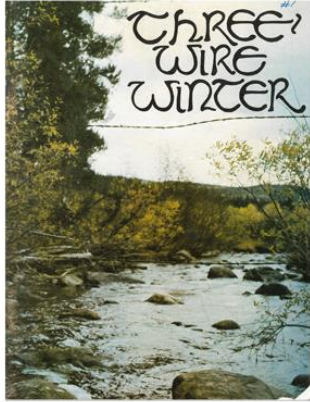
Jill McKinney
Gunnison County Libraries

Alysa Selby
Bud Werner Memorial Library

Martha Talman
Fort Lewis College

Nicole LeBoeuf Trujillo
Adams State University

Bud Werner - Three Wire Winter Oral History



Museum Partnership

(24) Magazines, (304) Articles, (248)
Interviews + Transcripts

Interviews already digitized (mostly)

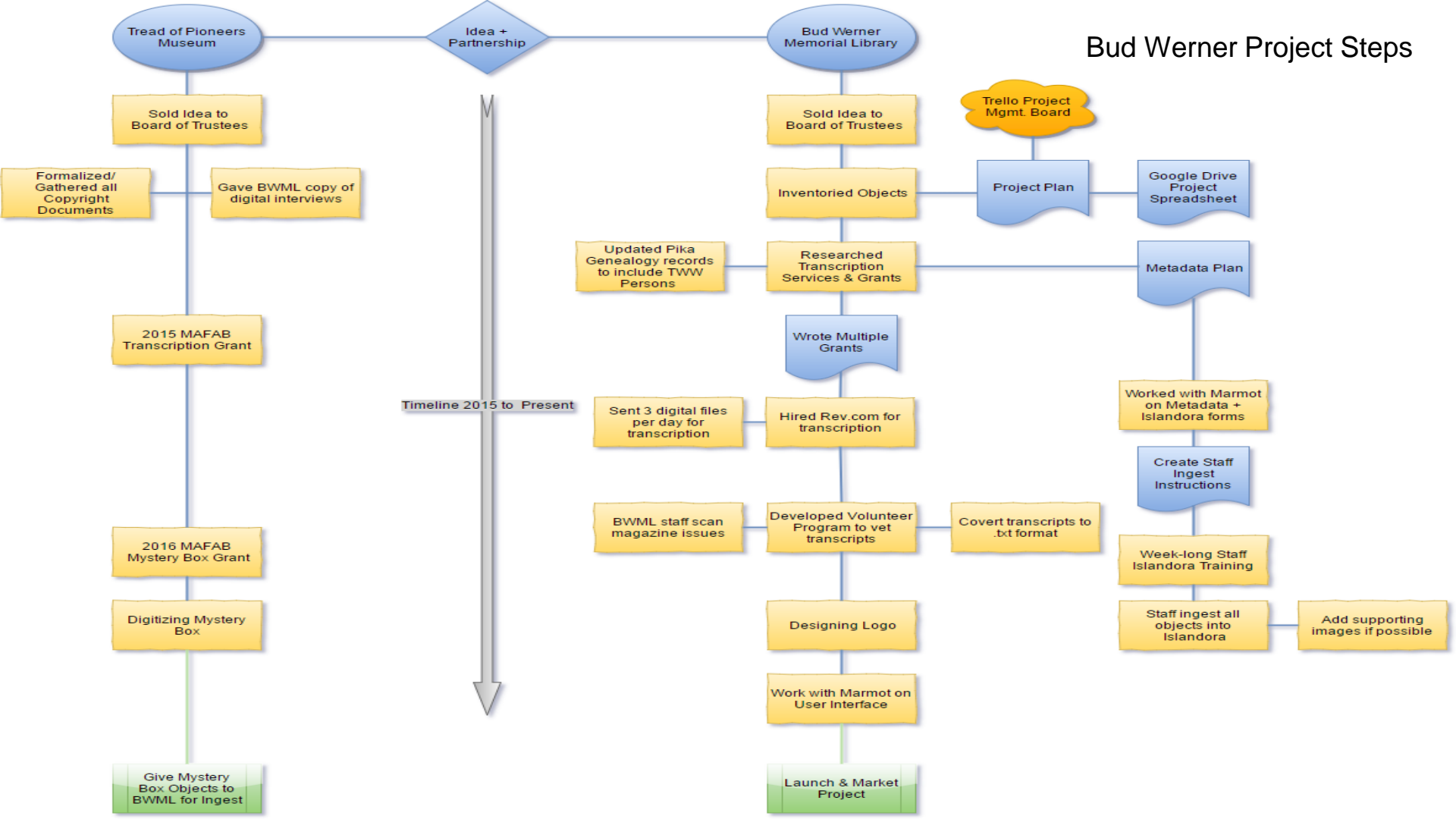
Transcriptions outsourced to Rev.com

Volunteers review transcripts

Scanning of magazines & metadata of all
objects done by (4) Reference Desk
Staff

Awarded \$15,000 in Grants

Bud Werner Project Steps



References

- TWW Google Drive Folder
- Marmot Project Website
- Marmot Budget
- Rev.com Account
- Marmot Project Description for Three Wire Winter
- Test for Candice
- OHMS Viewer
- Google Digitization Account
- Islandora Logins
- FTP to Marmot
- Add a card...

To Do

- Add Cemetery Descriptions (Oct 31)
- Review Pika Display (Sep 30)
- Create Marketing Plan (Sep 30)
- Metadata Remaining TWW Documents (Jul 31)
- Oral History Workshop at Bud Werner
- Oral History Workshop at Tread
- Metadata Input for Oral History Workshop Materials
- Marmot Launches Projects
- Followup with Kate Hawk
- Begin Marketing
- Add a card...

Doing

- Scan Remaining TWW Documents (Jul 31)
- Bill & Tanna Identify Interviewees (Apr 30, 2017)
- Digitize & Transcribe the Mystery box.
- Logo for TWW
- Metadata 1976 TWW Documents (Sep 15)
- Add a card...

Future Work

- Gather All Rights Documents
- Add a card...

Pending on Someone Else

- Add a card...

Done

- Train Staff for Metadata Entry (14/14)
- MAFAB Grant Finalization
- My votes is stay original- use scan of this cover.
- Administrative Interface Developed by Marmot
- Staff Documentation for digitization & metadata (2/2, Apr 15)
- Send Interviews for Transcription
- Reconcile the orphan audio files
- Review UI Needs with Marmot
- Add a card...

Trello Project Management Tool

Bud Werner Links

Trello Project Management tool: <https://trello.com/>

Rev.com Transcription Services: <https://www.rev.com/>

Project Plan:

https://docs.google.com/document/d/1Fa0EX1Wu9RIqF_4FTthjiHwGzA7xQRabOAg8a69xtNHo/edit?usp=sharing

Project Spreadsheet:

https://docs.google.com/spreadsheets/d/1azjrNvZRDoUH6hsfHyqDhm_f0eFOOhG5toIpWNpsqY4/edit?usp=sharing

Metadata Plan: https://docs.google.com/spreadsheets/d/1IIIJ4rP-wQ7DTNGd6fw27_al8D6p83YFOtn8MYFr7Vk/edit?usp=sharing

Staff Ingest Instructions:

<https://drive.google.com/folderview?id=0ByiGePAMYCQUWW1NTXVoWXITY2s&usp=sharing>

Gunnison - History of Cattlemen's Days Rodeo

Partnered with Cattlemen's Days Association

100+ years of archival material in house

Additional material from community members

Staff members worked on Metadata and scanning.

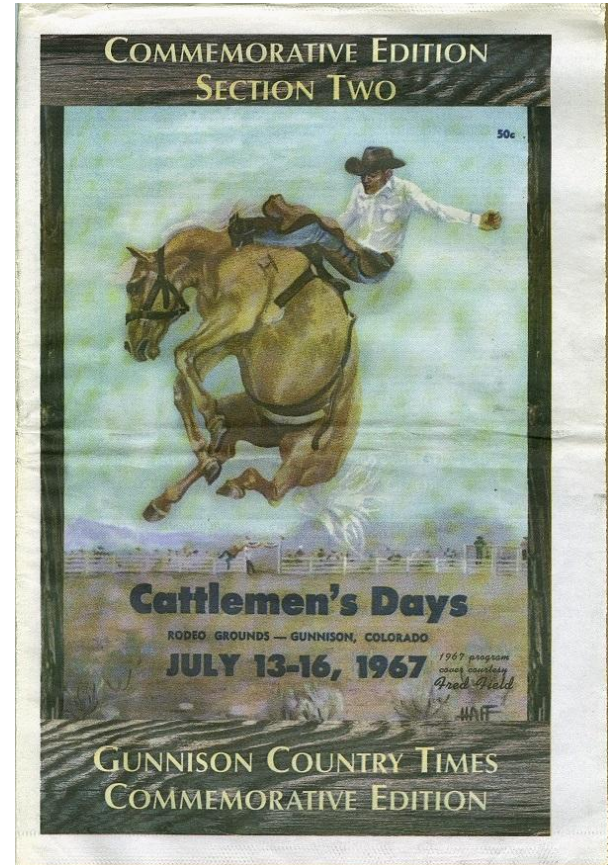
Volunteers also worked on scanning.

Project was funded primarily out of GCLD budget, with a small donation from Cattlemen's Days Association.

Other community organizations have approached us to archive their materials -

Boomers and Beyond - Video Oral Histories

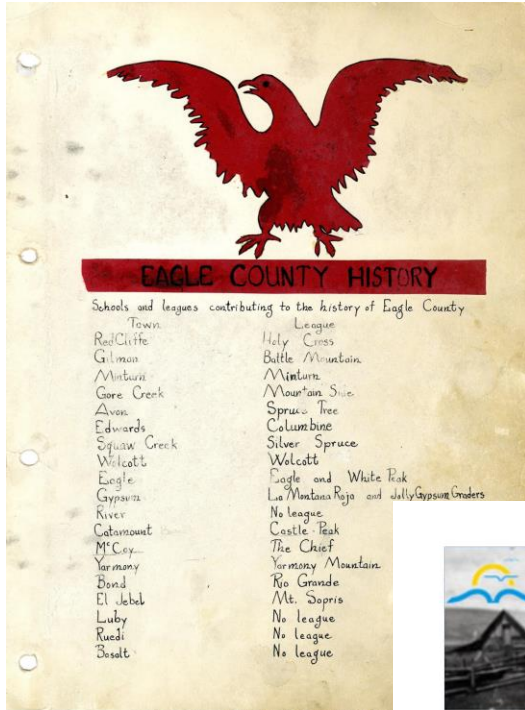
Crested Butte Mountain Heritage Museum - Archives



Cattlemen's Days Metadata Linking Chart



Eagle Valley Library District Year 1 Projects



Eagle Valley Local
History Archive

Existing Collection

- Migration from PastPerfect
- Partnership with Eagle County Historical Society
- District-funded Local History Department
 - 1 person on staff
 - Volunteers for...some things

Project: "History of Eagle County" or Red Book

- Student scrapbook of Eagle County
- Joint ownership with ECHS

PastPerfect Migration

6,000+ objects with metadata

Local and provided

Special requests:

request form, no downloads

Archival description vs. library
subject headings

Missing/extra data

Duplicates

Thumbnails

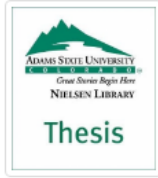
The screenshot shows the Eagle Valley Library District website interface. At the top, there is a search bar with the text 'eagle county high school class' and a search button. Below the search bar, there are navigation links for 'Home', 'Local Digital Archive', and 'First Graduating Class of...'. The main content area features a large photograph of the 'First Graduating Class of Eagle County High School, 1910'. To the left of the main image, there are several smaller sections: 'RELATED ARCHIVE COLLECTIONS' with a thumbnail of a building, 'LIBRARIAN PICKS' with a book cover titled 'EAGLE VALLEY LOCAL HISTORY', and 'FROM THE ARCHIVE' with a thumbnail of a group of people. Below these sections is a 'MORE FROM THE CATALOG' section featuring a book cover for 'I Am Malala: the girl who stood up for education and...'. At the bottom of the page, there is a link for 'All Results (28585)'. The website has a blue and white color scheme with a yellow accent bar.

Metadata:

Education
Schools

Graduation ceremonies

Adams State University - Theses



1) [A new perspective: MA in art thesis paper](#)

Author: [McCaulley, Madison.](#)
Publisher: Adams State College
Pub. Date: 2011.

Choose a Format

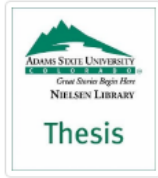
[+ Book](#) **On Shelf (library use only)**
ASU Archives LD18.A4ha M331

Show Edition

More Info

Add To List

SHARE



2) [Twenty paintings: a creative thesis for the Masters Degree in painting](#)

Author: [Dietrich, Linda.](#)
Publisher: Adams State College
Pub. Date: 1977.

Choose a Format

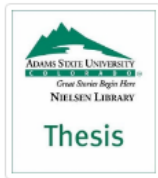
[+ Book](#) **On Shelf (library use only)**
ASU Archives LD18.A4ha D54

Show Edition

More Info

Add To List

SHARE



3) [Linking strength with speed](#)

Author: [Dameworth, Bryan.](#)
Publisher: Adams State College ;
Pub. Date: 2000.

Choose a Format

[+ Book](#) **On Shelf (library use only)**
ASU Archives LD18.A4ha D36

Show Edition

More Info

Add To List

SHARE



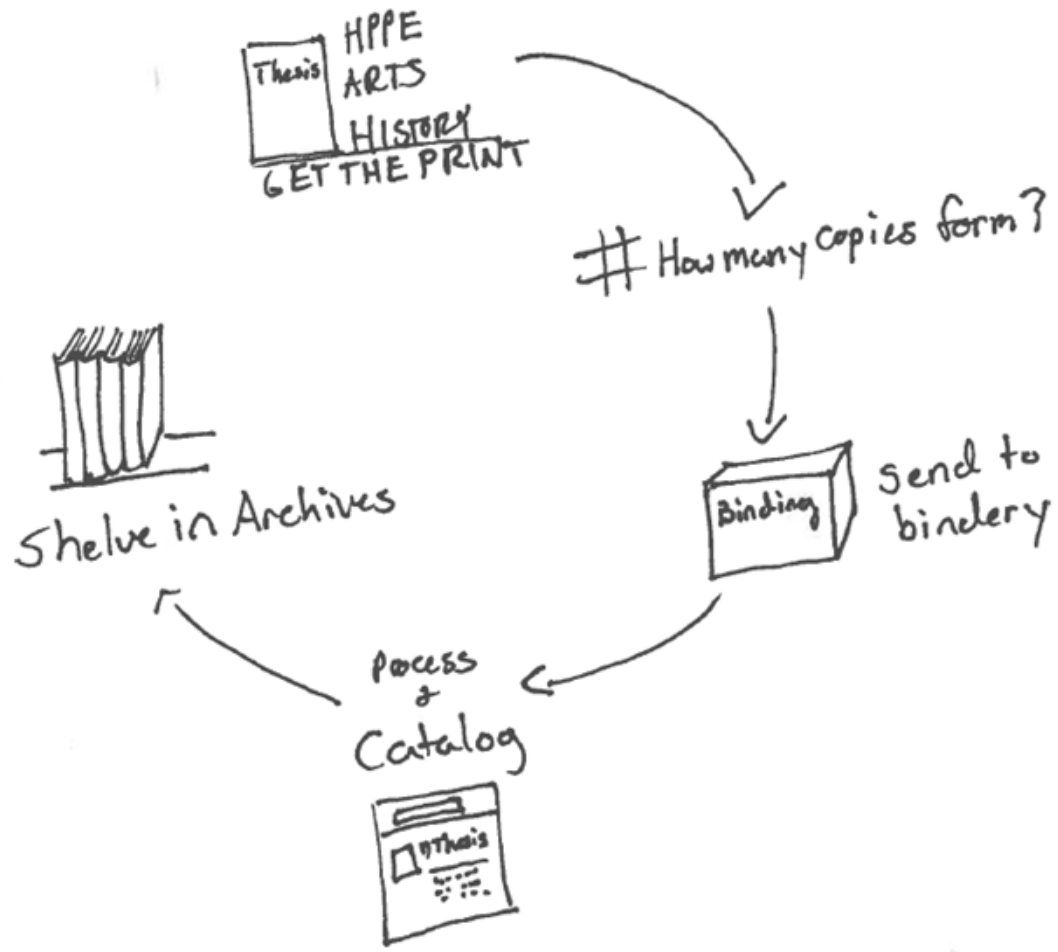
Partnership with HPPE, History, Art Departments; Graduate Council

(448) Theses in archives total; (31) digitized as optimized PDF files.

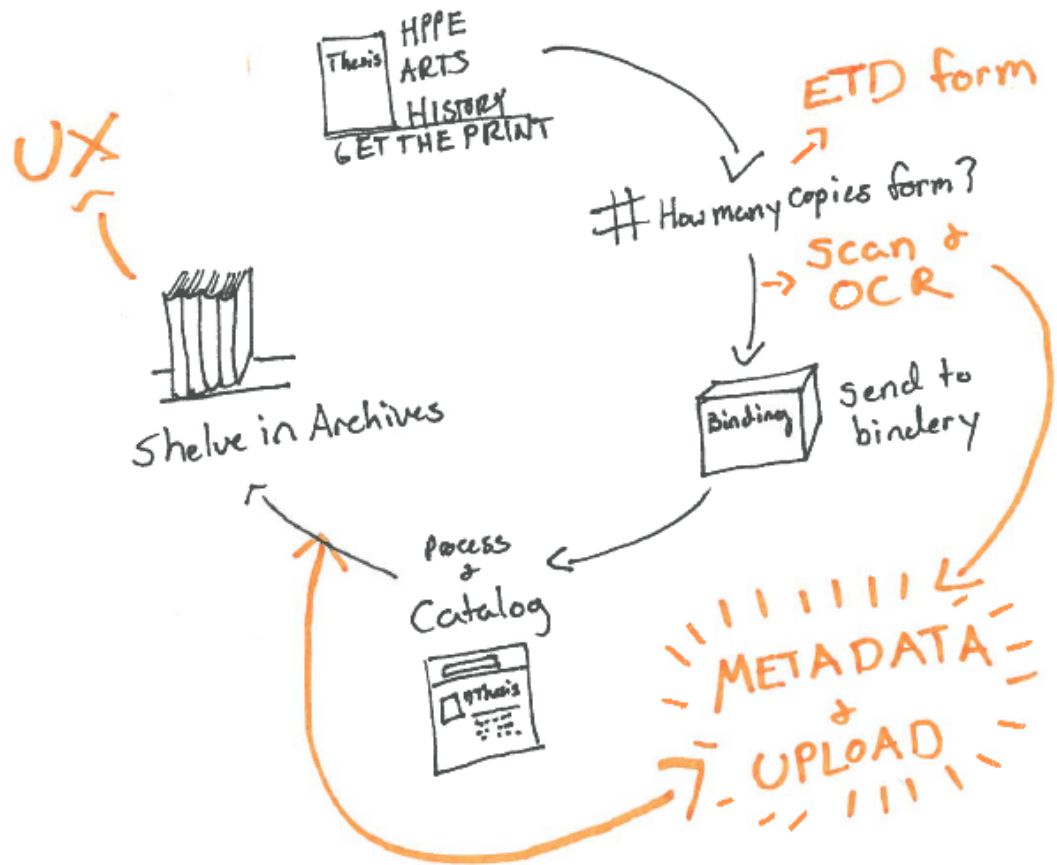
Theses scanned using the copier. Most of the work was done by student workers.

Project funding was provided by the library.

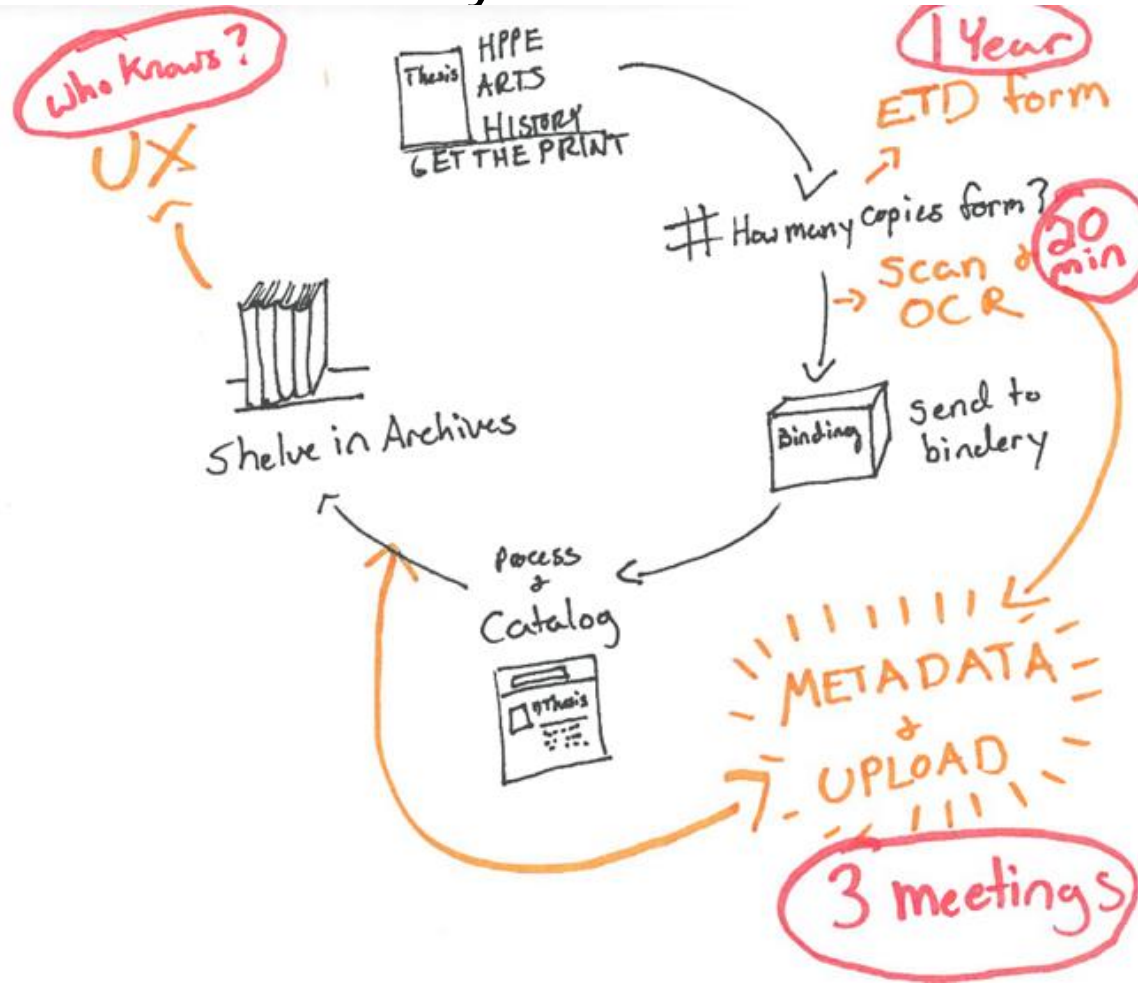
Adams State University - Old Theses Workflow



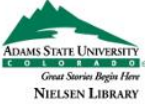
Adams State University - New Theses Workflow



Adams State University - Time Estimates



Adams State University - Theses Display



ADAMS STATE UNIVERSITY
Great Stories Begin Here
NIELSEN LIBRARY

[My Account](#) [Log Out](#)

Search for by Keyword in Nielsen Library Keep Applied Filters [Advanced Search](#)

Home » Local Digital Archive »

Showing 1 - 2 of 2 , query time: 0.01s

Hide Covers Covers List

Sort Results By

Best Match

Applied Filters

Type: Academic Paper

Narrow Your Results

▼ Subject

- College athletes – Psychology. (1)
- HPPE Department – Thesis – Adams State University. (1)
- History Department – Thesis – Adams State University. (1)
- Sports – Psychological aspects. (1)
- Women athletes – Psychology. (1)

▼ Type

- Academic Paper (remove)

▼ Archive Collection

- Adams State Academic Research (2)

1) Exploring Athletic Identity in a Team of NCAA Division II Women's Basketball Players

Format: Pdf

An athlete will one day experience retirement from their respective sport. Athletic identity can play a role in how the athlete may cope with this transition to life without athletics. Thus, the purpose of this study was to explore the underlying factors of athletic identity development in a team of Division II Women's Basketball players, and to understand their experiences of a positive psychology intervention focused on developing positive self-identity...

[More Info](#) [Add To List](#)

2) The Gold King Mine: Past, Present, and Future

Format: Pdf

The Gold King Mine, a previously insignificant site, came to the nation's attention on August 5, 2015, when toxic material from the mine poured into a tributary of Colorado's Animas River, severely damaging the ecosystem for miles downstream. Although the EPA has been blamed and has accepted responsibility for the spill it is not entirely at fault. The complete list of causes for this environmental disaster extends back to the Nineteenth century and...

[More Info](#) [Add To List](#)

Search Tools: [Get RSS Feed](#) [Email this Search](#) [Save Search](#) [Export To Excel](#)



Fort Lewis College

Nina Heald Weber Postcard Collection

± 5,000 historic postcards of Durango and Four Corners region

Owned by Center of Southwest Studies

- Most images already digitized
- Two images for every postcard (back and front)
- Basic information in homegrown Access database
- Images and descriptions migrated into Islandora

Why is Reed Library involved in this project?

- Collaboration on campus
- Library footprint (metadata experts)





Fort Lewis College

Reed Library responsibilities:

With Marmot, organized metadata schema

Correcting and completing data on each postcard (more fields, transcription)

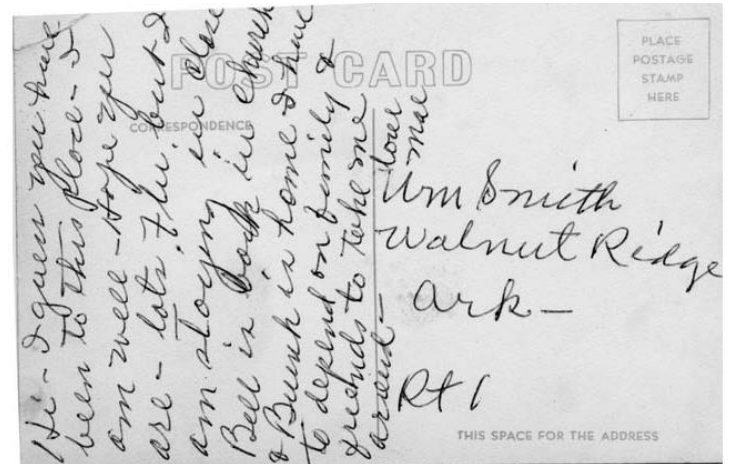
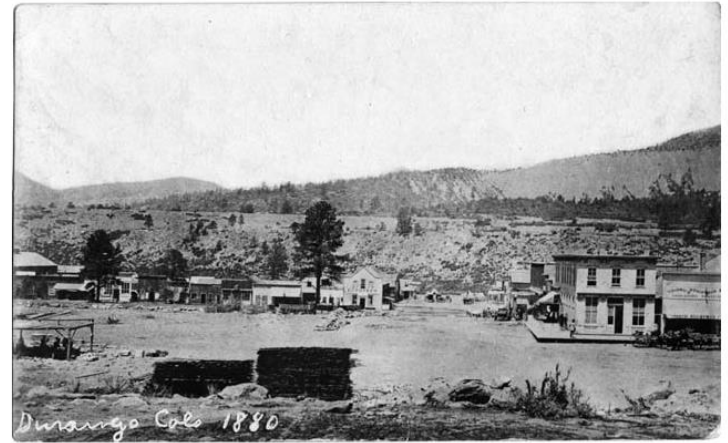
Problems we encountered right away

Two postmarks

Deciphering writing

Decisions - subject, entities, entering twice

Project Management





Fort Lewis College

1. Import images and existing descriptions from Access into Islandora

- Export difficult
- Import time-consuming

2. View each postcard, correct and add data, including linked data

- Increasing accuracy, not perfect
- Some students are suited, some not
- Need to develop better training for students - testing them
- Deciding which subject headings is difficult - better to add terms to description
- Enter into tracking spreadsheet, including entity work required
- Interface clunky (long scrolling document)
- Problems with images loading

3. Quality control

- Check work – must be timely or the projects stops
- Review / Retrain
- Reassign some people



4. Entity Work: DECISIONS!

- Create entities for people, places, events, and organizations
- Lack of clarity as to what deserves an entity
- Requires research

5. Project Management

- Check entity work
- Monitor individual progress
- Train / retrain as needed

6. Rise and repeat a few thousand times.

LINK: <http://fortlewis2.marmot.org/Archive/fortlewis:2/Exhibit>

Questions?